



# PROFESSIONAL *HIGHER* *EDUCATION* ENGLISH TAUGHT PROGRAMMES

## AP DEGREES

- Computer Science
- Marketing Management
- Multimedia Design and Communication
- Service, Hospitality and Tourism Management

## BACHELOR TOP-UP DEGREES

- Innovation and Entrepreneurship
- International Hospitality Management
- International Sales and Marketing Management
- Software Development
- Sport Management
- Web Development



## CONTENTS

|   |    |
|---|----|
| Welcome .....                                       | 4  |
| Why a professional higher education programme ..... | 6  |
| Why Denmark? .....                                  | 6  |
| Why Copenhagen? .....                               | 6  |
| Why Copenhagen Business Academy? .....              | 6  |
| Structure of the programmes .....                   | 7  |
| <b>AP DEGREES</b>                                   |    |
| Computer Science .....                              | 8  |
| Marketing Management .....                          | 9  |
| Multimedia Design and Communication .....           | 10 |
| Service, Hospitality and Tourism Management .....   | 11 |
| <b>BACHELOR TOP-UP DEGREES</b>                      |    |
| Innovation and Entrepreneurship .....               | 12 |
| International Hospitality Management .....          | 13 |
| International Sales and Marketing Management .....  | 14 |
| Software Development .....                          | 15 |
| Sport Management .....                              | 16 |
| Web Development .....                               | 17 |
| <b>PRACTICAL MATTERS</b>                            |    |
| Admission requirements .....                        | 18 |
| Tuition fees .....                                  | 20 |
| Open house .....                                    | 21 |
| How to apply .....                                  | 21 |
| General facts .....                                 | 22 |
| Campuses .....                                      | 22 |

# WELCOME

WE WELCOME YOU TO COPENHAGEN BUSINESS ACADEMY - THE LARGEST BUSINESS ACADEMY IN DENMARK

At Copenhagen Business Academy, we focus on teaching you what is relevant for your future career. We value our affiliation to the business community in Copenhagen, and internships are an integrated part of all our programmes. The Copenhagen area has plenty to offer with respect to international and national companies. As the capital of Denmark, it is a great place to launch an international career.

At Copenhagen Business Academy we care about you and your future. Our lecturers and staff strive to make you feel welcome. We have students from all over the world and you will be surrounded by young people who are looking for new friends and a future network. At Copenhagen Business Academy we value having fun both in and out of class.

Copenhagen Business Academy is a state-funded self-governing institution. Our programmes are all accredited by the Danish Ministry of Science, Innovation and Higher Education.



Every year, Denmark tops a **“quality of life”** list. You’re rarely more than a short pedal from the bracing seaside, the picturesque countryside or an architectural delight, making Denmark the perfect place to put pedal power into practice.

Quote: Lonely Planet’s 2012 Top 10 Countries.



## WHY A PROFESSIONAL HIGHER EDUCATION PROGRAMME?

### Accreditation

Accreditation is mandatory for all higher education programmes in Denmark and is a precondition for achieving public funding.

Therefore all professional higher education programmes at Cphbusiness are accredited by the Danish Evaluation Institute (EVA), as well as the Accreditation Agency ACE Denmark under the Danish Ministry of Science, Innovation and Higher Education.

### Ambitious business

Cphbusiness offers career-focused programmes with strong links to the business world. All lecturers have close ties to Danish and international companies, ensuring continuous interaction between lecturing and the latest trends in business life.

All programmes at Cphbusiness include an internship, lasting 3 months, which enables you to apply your acquired knowledge.

### Flexibility

The structure of the Danish higher education programmes is very flexible (overview on page 7). You can obtain a pro-

fessional Bachelor's Degree in 3½ years. After the first 2 years you will obtain an AP Degree. From there you may decide to join the job market or to continue with a Bachelor Top-up programme at Cphbusiness (1-1½ years).

### Further education

A professional Bachelor's Degree from Cphbusiness gives you various opportunities for admission to a Master's degree in Denmark or abroad. Your options depend on the type of Bachelor programme that you have completed, your specialisation, your grades and your language skills.

### WHY DENMARK?

It is hardly surprising that Denmark has become such a popular place to study - students from all over the world meet in this historic, yet progressive and modern country. Denmark offers thriving cities, idyllic landscapes and beautiful beaches. It is a wealthy and innovative society that enjoys a green lifestyle. Most Danes speak English. You will find that Danes have a fine-tuned talent for organisation, while the open-minded and easy-going spirit still lives on.

The Danish educational system is recognised internationally and several Danish companies are among the global pioneers of new and dynamic business management methods. Visit us and see for yourself.

### WHY COPENHAGEN?

The Campuses of Lyngby, Nørrebro and Valby are all located in the Copenhagen area. This means that you will always have easy access both to the charming and hectic city centre of Copenhagen, with its abundance of cafés, shops and historic buildings, and to the northern, sophisticated part of Copenhagen, with its green areas, parks, sports facilities and beaches.

### WHY COPENHAGEN BUSINESS ACADEMY

**Internationalisation**  
As a student at Copenhagen Business Academy you will be part of an international environment on campus, as you will share the facilities with students from many different countries.

Just as we encourage internationalisation on campus and the integration of

Danish and international students, we encourage the desire to go abroad. During your study programme you will have the opportunity for an internship abroad or to follow shorter or longer study periods abroad.

We wish to reflect the global world we live in and provide students with the international competences that are demanded in an ever more competitive international business environment.

### Teaching methods

The teaching at Copenhagen Business Academy is based on interaction between students and lecturers and conducted in small classes. The methods

alternate between theoretical tuition, lectures, exercises, cases and interdisciplinary projects, coupled with individual tutoring. You will learn how to apply theory to solve real problems in a company. Visits to companies and classes held by Danish and international guest lecturers are an integral part of your education.

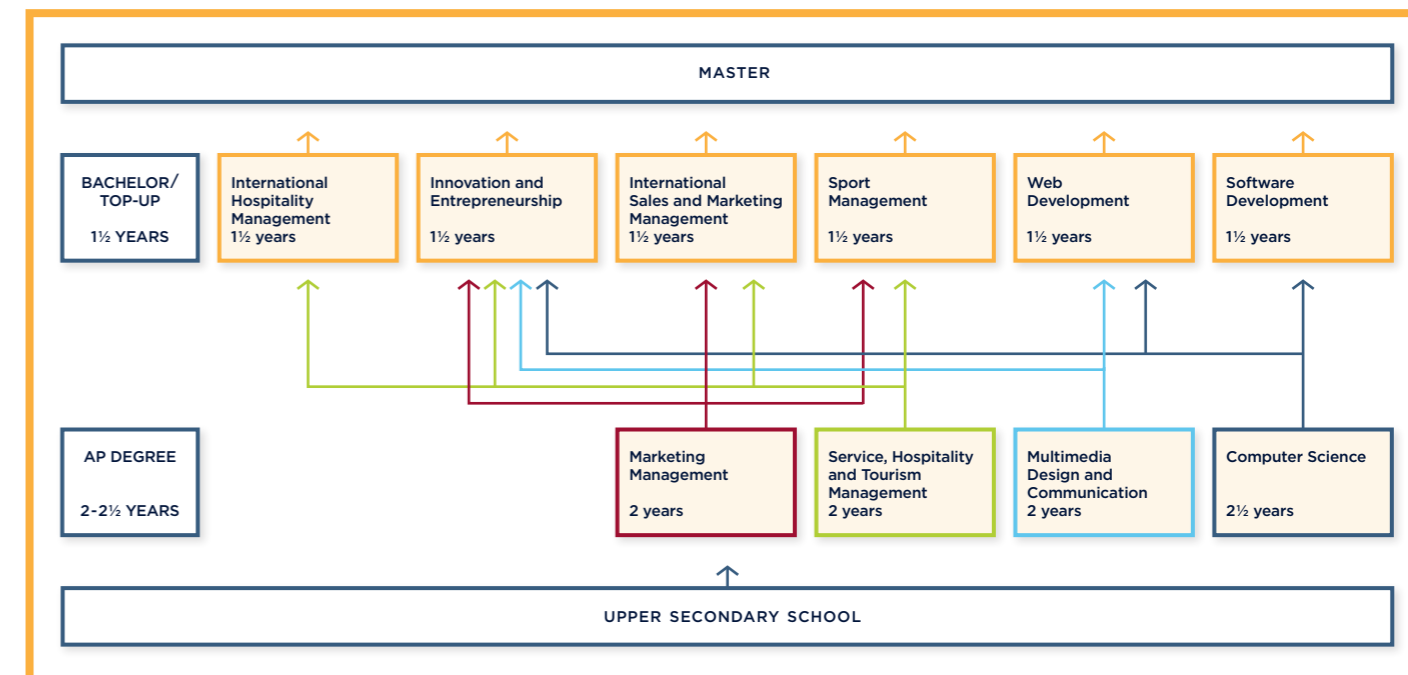
The courses are designed to ensure that you will have close contact with fellow students and lecturers.

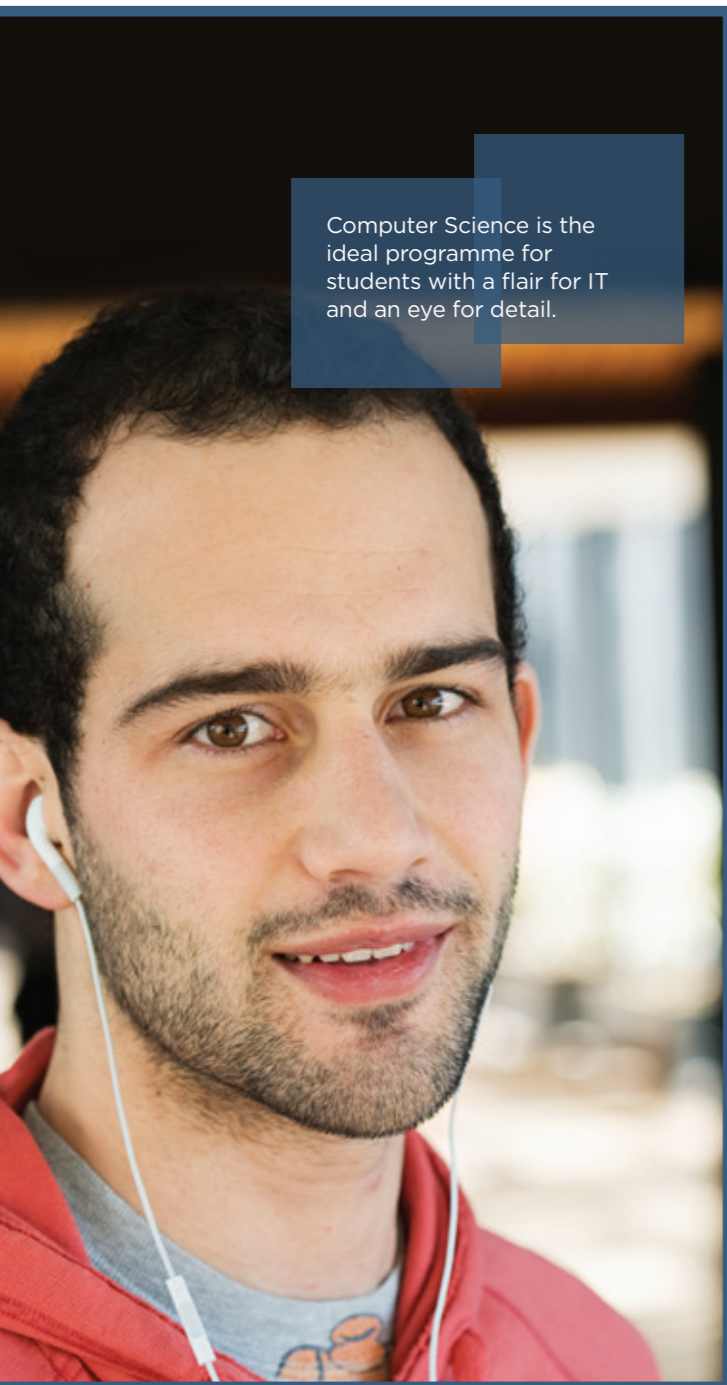
We demand a lot from our students. We particularly expect you to be committed not only to your studies, but also to the social and extracurricular activities.

### Innovation and entrepreneurship

A new focus area is innovation and entrepreneurship. We wish to enhance and support students' entrepreneurial mindset, to give them competences they can use to start up their own businesses, or to prepare them for employment by established creative companies. This is evident in the classroom, as well as in the incubation environments where students can share their experience and receive advice from a wide range of business contacts.

### MODEL - SECTION OF THE DANISH EDUCATIONAL SYSTEM





Computer Science is the ideal programme for students with a flair for IT and an eye for detail.

## COMPUTER SCIENCE

### AP DEGREE IN COMPUTER SCIENCE

Would you like a career in IT? Do you want to develop, maintain and renew information technology systems? Then get an AP Degree in Computer Science.

### CONTENT

Each semester totals 30 ECTS. The major subject areas are:

- Programming
- Systems Development
- Technology
- The Company

Your final semester consists of an Internship (15 ECTS) and a Final Examination Project (15 ECTS).

### JOB OPPORTUNITIES

Typically your first job will be as a programmer, system developer or consultant.

### FURTHER STUDIES

As a Computer Science graduate you will qualify for admission to the following Bachelor Top-up programmes at Cphbusiness:

- Software Development
- Web Development
- Innovation and Entrepreneurship

**Duration:** 2½ years  
**Level:** AP Degree  
**Intake:** Summer  
**Location:** Cphbusiness Lyngby



Learn more  
[www.cphbusiness.dk/english/computer-science](http://www.cphbusiness.dk/english/computer-science)

## MARKETING MANAGEMENT

### AP DEGREE IN MARKETING MANAGEMENT

Is your dream a career in marketing? Then get an AP Degree in Marketing Management and learn how to analyse, plan and implement domestic and international marketing activities in trade, production and service industries. The programme also provides a good basis for starting up your own company.

### CONTENT

Each semester totals 30 ECTS. The major subject areas are:

- International marketing and sales
- Economics
- Communication, organisation and management
- International business law

Your final semester consists of an Internship (15 ECTS) and a Final Examination Project (15 ECTS).



Learn more  
[www.cphbusiness.dk/english/marketing-management](http://www.cphbusiness.dk/english/marketing-management)

### JOB OPPORTUNITIES

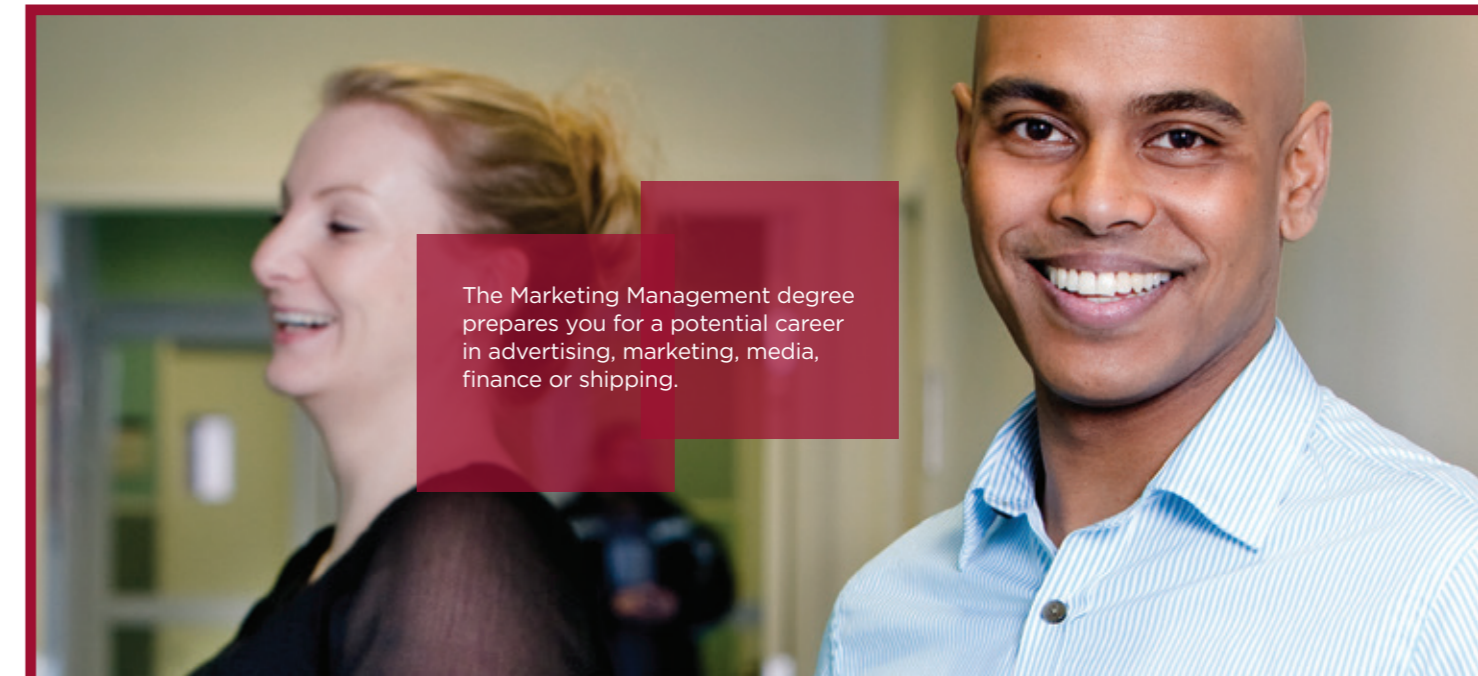
Examples of your first position as a Marketing Management graduate might be account manager, marketing assistant, marketing coordinator, sales assistant or purchasing assistant.

### FURTHER STUDIES

As a Marketing Management graduate you will qualify for admission to the following Bachelor Top-up programmes at Cphbusiness:

- Innovation and Entrepreneurship
- International Hospitality Management
- International Sales and Marketing Management
- Sports Management

**Duration:** 2 years  
**Level:** AP Degree  
**Intake:** Summer and winter  
**Location:** Cphbusiness Lyngby and Cphbusiness Nørrebro



The Marketing Management degree prepares you for a potential career in advertising, marketing, media, finance or shipping.



Multimedia Design and Communication takes advantage of the newest technologies in graphics and design.

## MULTIMEDIA DESIGN AND COMMUNICATION

### AP DEGREE IN MULTIMEDIA DESIGN AND COMMUNICATION

Are you interested in working with creative communication, and do you believe that new technology is the future in communication? Then the AP Degree in Multimedia Design and Communication may be for you. Your focus can be on designing either mobile or modern web solutions.

### CONTENT

Each semester totals 30 ECTS. The major subject areas are:

- Communication and presentation
- Design and visualisation
- Interaction development
- Organisation

Your final semester consists of an Internship (15 ECTS) and a Final Examination Project (15 ECTS).

### JOB OPPORTUNITIES

Your first job may be a position as a communication consultant, web developer or multimedia project manager.

### FURTHER STUDIES

As a Multimedia Design and Communication graduate you will qualify for admission to the following Bachelor Top-up programmes at Cphbusiness:

- Innovation and Entrepreneurship
- Web Development

**Duration:** 2 years  
**Level:** AP Degree  
**Intake:** Summer  
**Location:** Cphbusiness Lyngby



Learn more  
[www.cphbusiness.dk/english/multimedia-design-and-communication](http://www.cphbusiness.dk/english/multimedia-design-and-communication)

## SERVICE, HOSPITALITY AND TOURISM MANAGEMENT

### AP DEGREE IN SERVICE, HOSPITALITY AND TOURISM MANAGEMENT

Would you like a career with the opportunity to work with people in a vibrant and international environment, such as tourism, hotel and restaurants, travel, transport or the industrial service sector? Then get an AP Degree in Service, Hospitality and Tourism Management.

### CONTENT

Each semester totals 30 ECTS. The major subject areas are:

- Service management and organisation
- Business development
- Global communication
- Service economics and finance

Your Internship (15 ECTS) takes place during your 3rd semester. A Final Examination Project (15 ECTS) concludes the final semester.

### JOB OPPORTUNITIES

Depending on your specialisation, your first job could be as a service consultant, service coordinator, project leader or team leader - typically within tourism or the hotel, restaurant or event industry.

### FURTHER STUDIES

As a Service, Hospitality and Tourism Management graduate you will qualify for admission to the following Bachelor Top-up programmes at Cphbusiness:

- Innovation and Entrepreneurship
- International Hospitality Management
- International Sales and Marketing Management
- Sport Management

**Duration:** 2 years  
**Level:** AP Degree  
**Intake:** Summer  
**Location:** Cphbusiness Lyngby and Cphbusiness Valby



Learn more  
[www.cphbusiness.dk/english/service-hospitality-and-tourism-management](http://www.cphbusiness.dk/english/service-hospitality-and-tourism-management)



The two-year degree is available in both English and Danish.

# INNOVATION AND ENTREPRENEURSHIP

## BACHELOR TOP-UP DEGREE IN INNOVATION AND ENTREPRENEURSHIP

Are you innovative with the dream of fulfilling your ideas? Then get a Bachelor's Degree in Innovation and Entrepreneurship. You will acquire competences to start your own company or work in an innovative environment within established companies.

### CONTENT

Each semester totals 30 ECTS. The major subject areas are:

- Creative and innovative processes
- Networks
- Feasibility studies
- Relational sales
- IT tools for businesses

Your final semester consists of an Internship (15 ECTS) and a Bachelor Project (15 ECTS).

### JOB OPPORTUNITIES

A Bachelor's Degree in Innovation and Entrepreneurship is for graduates seeking a career which involves creative decision making. It provides the right combination of fundamental theory and practice needed to start a successful business.

### FURTHER STUDIES

As a graduate, you will have the opportunity to study for a Master's Degree at a university in Denmark or abroad. Admission requirements may vary.

**Duration:** 1½ years  
**Level:** Bachelor Top-up Degree  
**Intake:** Summer  
**Location:** Cphbusiness Lyngby



Learn more  
[www.cphbusiness.dk/english/innovation-and-entrepreneurship-ba](http://www.cphbusiness.dk/english/innovation-and-entrepreneurship-ba)



You will learn how to solve cases which involves various companies.



Students will learn how to apply theories in practice by using casework involving real business world scenarios used at a multi-disciplinary level.

# INTERNATIONAL HOSPITALITY MANAGEMENT

## BACHELOR TOP-UP DEGREE IN INTERNATIONAL HOSPITALITY MANAGEMENT

Would you like an exciting career at management level within the tourism, hotel or experience economy with an international perspective? Then get a Bachelor's Degree in International Hospitality Management. You will gain in-depth knowledge of the many aspects of the hospitality industry, including economics and management.

### CONTENT

Each semester totals 30 ECTS. The major subject areas are:

- Economics
- Management
- Culture and guest relations
- Strategy

Your second semester includes an Internship (15 ECTS). A Bachelor Project concludes the final semester.



Learn more  
[www.cphbusiness.dk/english/international-hospitality-management-ba](http://www.cphbusiness.dk/english/international-hospitality-management-ba)

### JOB OPPORTUNITIES

As a graduate you will be qualified to take on positions such as product manager, marketing manager, sales manager or project manager in the hotel, restaurant, tourism, service or experience industries.

### FURTHER STUDIES

As a graduate you will have the opportunity to study for a Master's Degree at a university in Denmark or abroad. Admission requirements may vary.

**Duration:** 1½ years  
**Level:** Bachelor Top-up Degree  
**Intake:** Summer  
**Location:** Cphbusiness Valby



If you wish to work with others in an international environment within sales and marketing this is the right programme for you.

## INTERNATIONAL SALES AND MARKETING MANAGEMENT

### BACHELOR TOP-UP DEGREE IN INTERNATIONAL SALES AND MARKETING MANAGEMENT

If you want a career within sales and marketing with an international perspective then get a Bachelor's Degree in International Sales and Marketing Management. You will develop knowledge and comprehension of business practice and applied theory, as well as sales and marketing methods from an international business perspective.

#### CONTENT

Each semester totals 30 ECTS. The major subject areas are:

- Industry and competitors
- Innovation
- Sales performance

Your final semester consists of an Internship (15 ECTS) and a Bachelor Project (15 ECTS).

#### JOB OPPORTUNITIES

As a graduate you will be qualified to take on positions such as marketing manager, marketing coordinator, export manager, sales support executive, sales manager and key account manager.

#### FURTHER STUDIES

As a graduate you will have the opportunity to study for a Master's Degree at a university in Denmark or abroad. Admission requirements may vary.

**Duration:** 1½ years  
**Level:** Bachelor Top-up Degree  
**Intake:** Summer  
**Location:** Cphbusiness Lyngby and Cphbusiness Nørrebro



**Learn more**  
[www.cphbusiness.dk/english/international-sales-and-marketing-management](http://www.cphbusiness.dk/english/international-sales-and-marketing-management)

## SOFTWARE DEVELOPMENT

### BACHELOR TOP-UP DEGREE IN SOFTWARE DEVELOPMENT

Would you like an exciting future within IT and Development? Then get a Bachelor's Degree in Software Development and learn how to handle communication and coordination in large IT projects.

#### CONTENT

Each semester totals 30 ECTS. The major subject areas are:

- Development of large-scale systems
- Contract-based systems development
- Systems Integration
- Tests

Your final semester consists of an Internship (15 ECTS) and a Bachelor Project (15 ECTS).



**Learn more**  
[www.cphbusiness.dk/english/software-development](http://www.cphbusiness.dk/english/software-development)

#### JOB OPPORTUNITIES

As a Software Development graduate you will be qualified to take on positions such as system developer, back-end developer, system integrator, applications architect or systems architect.

#### FURTHER STUDIES

As a graduate you will have the opportunity to study for a Master's Degree at a university in Denmark or abroad. Admission requirements may vary.

**Duration:** 1½ years  
**Level:** Bachelor Top-up Degree  
**Intake:** Summer and winter  
**Location:** Cphbusiness Lyngby



Are you into software development and passionate about IT? Then the Bachelor Top-up degree in Software Development is the right programme for you.



## SPORT MANAGEMENT

### BACHELOR TOP-UP DEGREE IN SPORT MANAGEMENT

Do you love sports and want to work in the sport industry? Then the Bachelor's Degree in Sport Management is the right programme for you. You will learn about every aspect of sports, including professional sports, sport events, and public and private sports businesses. As a Bachelor of Sport Management you will learn to manoeuvre within the sports business. Your future tasks may range from running professional sports activities to planning and conducting events.

### CONTENT

Each semester totals 30 ECTS. The major subject areas are:

- Sport marketing
- Sport management
- Sport economics

Your final semester consists of an Internship (15 ECTS) and a Bachelor Project (15 ECTS).

### JOB OPPORTUNITIES

As a graduate you will be qualified to take on positions such as sports event planner, marketing and event coordinator, sponsorship coordinator, hall inspector, development consultant, sports consultant, project manager and key account manager.

### FURTHER STUDIES

As a graduate you will have the opportunity to study for a Master's Degree at a university abroad. Admission requirements may vary.

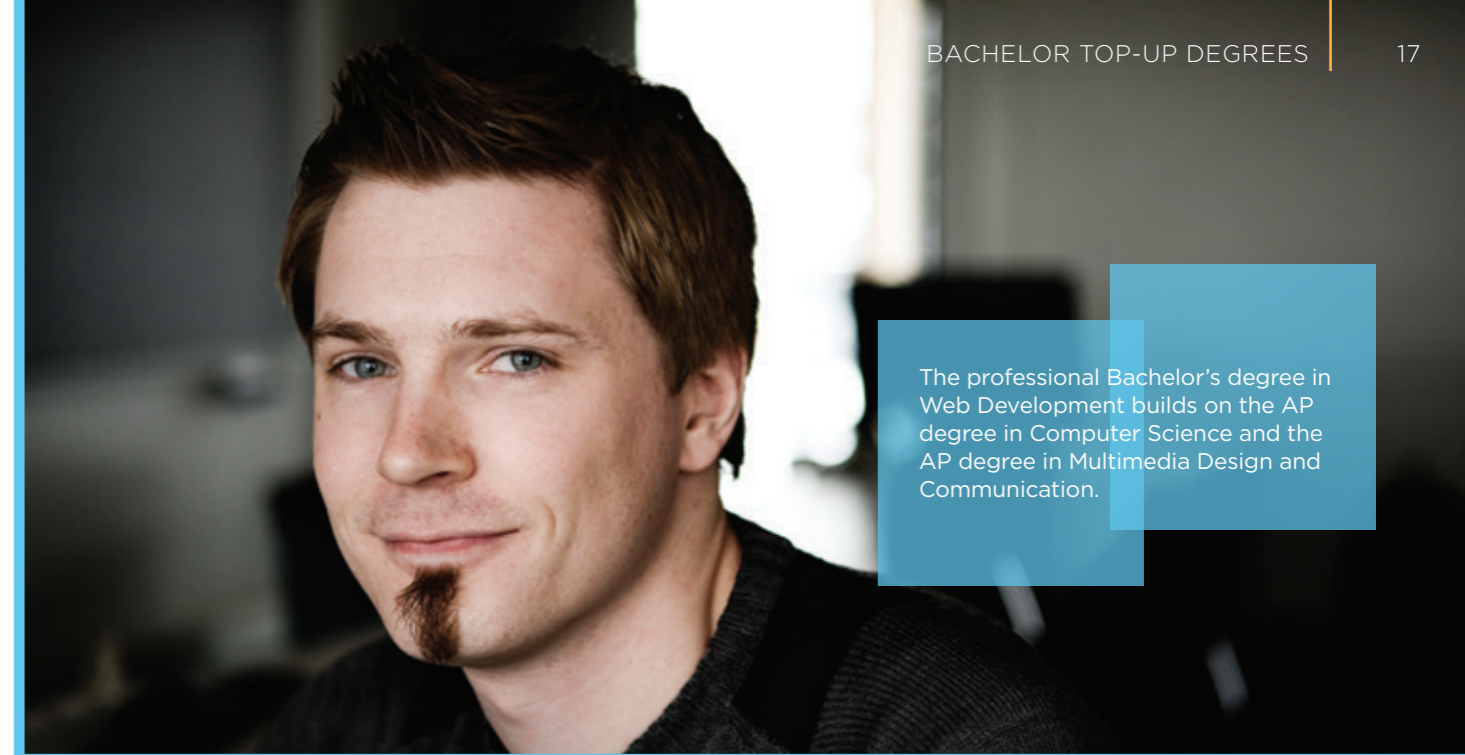
**Duration:** 1½ years  
**Level:** Bachelor Top-up Degree  
**Intake:** Summer  
**Location:** Cphbusiness Lyngby



Learn more  
[www.cphbusiness.dk/english/sport-management](http://www.cphbusiness.dk/english/sport-management)



If you are into sports, events and leisure.



The professional Bachelor's degree in Web Development builds on the AP degree in Computer Science and the AP degree in Multimedia Design and Communication.

## WEB DEVELOPMENT

### BACHELOR TOP-UP DEGREE IN WEB DEVELOPMENT

Would you like a career in Web Development? Then get a Bachelor's Degree in Web Development and learn how to design and build web solutions of all sizes. You will learn to build web systems from scratch using object-oriented IDE, CMS and relational databases. Furthermore, you will be able to use and analyse methods to create advanced media technology productions.

### CONTENT

Each semester totals 30 ECTS. The major subject areas are:

- Web programming and networks
- Databases and XML
- Interface design and digital aesthetics
- Web communication and network sociology

Your final semester consists of an Internship (15 ECTS) and a Bachelor Project (15 ECTS).

### JOB OPPORTUNITIES

As a Web Development graduate you will be qualified to take on positions such as web developer, web designer, front-end developer, interface designer, application designer, CMS designer or webmaster.

### FURTHER STUDIES

As a graduate you will have the opportunity to study for a Master's Degree at a university in Denmark or abroad. Admission requirements may vary.

**Duration:** 1½ years  
**Level:** Bachelor Top-up Degree  
**Intake:** Summer and winter  
**Location:** Cphbusiness Lyngby



Learn more  
[www.cphbusiness.dk/english/web-development](http://www.cphbusiness.dk/english/web-development)

# ADMISSION REQUIREMENTS

## ADMISSION REQUIREMENTS - AP DEGREES

|   |  |  |
|---|--|--|
| Computer Science                            | High level in math* (Danish level B)             | <b>Denmark and Scandinavia</b><br>General upper secondary education.<br>The International and the European Baccalaureate.<br><br><b>United States and countries with a similar education system</b><br>High school diploma from the United States followed by at least one year of university or college studies in relevant subjects (equivalent to three advanced placement tests).<br><br><b>UK and countries with a similar education system</b><br>GCE Advanced Level-exams (at least 3 A levels in relevant subjects) in combination with GCSE-exams or in combination with GCE/AS-level exams.<br><br><b>African countries, Bangladesh, India, Pakistan, Philippines and countries with a similar education system</b><br>At least 2 years of study in relevant subjects from universities. We recommend a Bachelor Degree. |
| Marketing Management                        | High level in math* (Danish level B)             |  |
| Multimedia Design & Communication           | Good level in economics or math (Danish level C) |  |
| Service, Hospitality and Tourism Management | Good level in economics or math (Danish level C) |  |

## ADMISSION REQUIREMENTS - BACHELOR TOP-UP DEGREES

|  |  |
|--|--|
| Innovation and Entrepreneurship              | AP degree in Service, Hospitality and Tourism Management, AP degree in Marketing Management<br>AP degree in Multimedia Design and Communication, AP degree in Computer Science<br>-or equivalent education |
| International Hospitality Management         | AP degree in Service, Hospitality and Tourism Management, AP degree in Marketing Management<br>-or equivalent education  |
| International Sales and Marketing Management | AP degree in Marketing Management, AP degree in Service, Hospitality and Tourism Management<br>-or equivalent education  |
| Software Development                         | AP degree in Computer Science<br>-or equivalent education  |
| Web Development                              | AP degree in Multimedia Design and Communication or AP degree in Computer Science<br>-or equivalent education  |
| Sport Management                             | AP degree in Service, Hospitality and Tourism Management, AP degree in Marketing Management<br>-or equivalent education  |

\* Certified document proving at least 275 hours of math within the last 3 years of your upper secondary education.

## ENGLISH REQUIREMENTS AP DEGREES

| TEST                                    | MINIMUM SCORE ACCEPTED |
|---|------------------------|
| TOEFL paper-based score                 | 550+                   |
| TOEFL computer-based test score         | 213+                   |
| TOEFL Internet-based score              | 80                     |
| IELTS academic score                    | 6.0+                   |
| Danish students                         | Level B                |
| Common European Framework for Languages | Level B2               |

## ENGLISH REQUIREMENTS BACHELOR TOP-UP DEGREES

| TEST                                    | MINIMUM SCORE ACCEPTED |
|---|------------------------|
| TOEFL paper-based score                 | 600+                   |
| TOEFL computer-based test score         | 230+                   |
| TOEFL Internet-based score              | 88                     |
| IELTS academic score                    | 6.5+                   |
| Danish students                         | Level A                |
| Common European Framework for Languages | Level C1               |



There are 4,050 students and 4,150 part-time students at our 5 campuses.



## TUITION FEES

- 1) **No tuition fees:** Danish students, students from Nordic countries, EU countries or Lichtenstein, as well as all international students with a permanent residence permit in Denmark or with a temporary residence permit with the possibility of obtaining a permanent residence permit.
- 2) All other students are required to pay the following fees (2013 prices):

### AP DEGREES

|                                     | PER SEMESTER           | INTERNSHIP SEMESTER    |
|-------------------------------------|------------------------|------------------------|
| Computer Science                    | DKK 40,000 / EUR 5,400 | DKK 30,000 / EUR 4,000 |
| Marketing Management                | DKK 32,500 / EUR 4,350 | DKK 25,000 / EUR 3,350 |
| Multimedia Design and Communication | DKK 40,000 / EUR 5,400 | DKK 30,000 / EUR 4,000 |
| Service, Hospitality and Tourism    | DKK 32,500 / EUR 4,350 | DKK 25,000 / EUR 3,350 |

### BACHELOR TOP-UP

|  | PER SEMESTER           | INTERNSHIP SEMESTER    |
|--|------------------------|------------------------|
| Innovation and Entrepreneurship              | DKK 32,500 / EUR 4,350 | DKK 25,000 / EUR 3,350 |
| International Hospitality Management         | DKK 32,500 / EUR 4,350 | DKK 25,000 / EUR 3,350 |
| International Sales and Marketing Management | DKK 32,500 / EUR 4,350 | DKK 25,000 / EUR 3,350 |
| Software Development                         | DKK 40,000 / EUR 5,400 | DKK 30,000 / EUR 4,000 |
| Sports Management                            | DKK 40,000 / EUR 5,400 | DKK 30,000 / EUR 4,000 |
| Web Development                              | DKK 40,000 / EUR 5,400 | DKK 30,000 / EUR 4,000 |

## OPEN HOUSE

Open House events are posted on [www.cphbusiness.dk](http://www.cphbusiness.dk). At an Open House you will get full information on the educational programme(s) you are interested in.

You will also have the opportunity to meet student counsellors, lecturers and current students. You will also be invited to join a class for a day. You can arrange this by contacting the relevant campus at Cphbusiness.



### HOW TO APPLY

The application procedure may depend on your nationality, the programme that you apply for, and whether you apply for the February or September intake.

In some cases, you are required to use the Danish public application form – the KOT form. You can find more information about the KOT application procedures at [www.optagelse.dk](http://www.optagelse.dk).

### APPLICATION DEADLINES:

- All international students (European as well as non-European) **15 March**
- Danish students **5 July**

In other cases you must use the Copenhagen Business Academy Direct Application Form that can be downloaded from our website.

# GENERAL FACTS

**Foundation:** In 2009 the departments for higher education of the following institutions formed Copenhagen Business Academy:

- Copenhagen North
- Niels Brock
- Copenhagen Hospitality College
- North Zealand Technical College



**Status:** State-funded self-governing institution.  
**Activities:** Higher education institution delivering programmes up to the level of a professional Bachelor's Degree (full-time, part-time, tailor-made) within Business, IT and Biotechnology.

**Full-time students:** 4,050 students  
**Part-time students:** 4,150 students

**International students:** Approx. 450  
**Nationalities:** Approx. 60  
**International partners:** Approx. 100 partners in Europe, Asia and North America.  
**Erasmus ID code:** DK KOBENHA57  
**Code of conduct:** Cphbusiness complies with the code of conduct of the Ministry of Science, Innovation and Higher Education.

**Campuses:** 5 (3 campuses offer programmes taught in English).

**Accreditation:** The Danish Evaluation Institute (EVA).

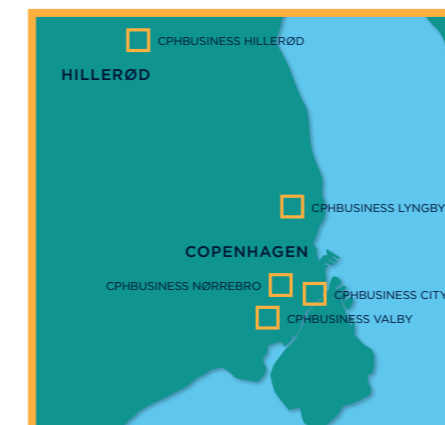
**Turnover:** DKK: 260,000,000 (EUR 34,000,000).

**Danish educational system:** www.ui.dk

THE PROGRAMMES TAUGHT IN ENGLISH ARE OFFERED AT THE FOLLOWING CAMPUSES

|  | CPHBUSINESS LYNGBY | CPHBUSINESS NØRREBRO | CPHBUSINESS VALBY |
|--|--------------------|----------------------|-------------------|
| Computer Science (AP Degree)                                   | ■                  |                      |                   |
| Marketing Management (AP Degree)                               | ■                  | ■                    |                   |
| Multimedia Design and Communication (AP Degree)                | ■                  |                      |                   |
| Service, Hospitality and Tourism (AP Degree)                   | ■                  |                      | ■                 |
| Innovation and Entrepreneurship (Bachelor Top-up)              | ■                  |                      |                   |
| International Hospitality Management (Bachelor Top-up)         |                    |                      | ■                 |
| International Sales and Marketing Management (Bachelor Top-up) | ■                  | ■                    |                   |
| Software Development (Bachelor Top-up)                         | ■                  |                      |                   |
| Sports Management (Bachelor Top-up)                            | ■                  |                      |                   |
| Web Development (Bachelor Top-up)                              | ■                  |                      |                   |

[WWW.CPHBUSINESS.DK](http://WWW.CPHBUSINESS.DK)



■ cphbusiness Nørrebro  
 Blågårdsgade 23B  
 DK-2200 Copenhagen N  
 Tel.: +45 36 15 45 03

The campus at Nørrebro is located close to the city centre of Copenhagen in a lively pedestrian area in the vibrant district of Nørrebro. The area is a cultural and colourful hub and offers many opportunities for shopping, dining and cultural experiences. The campus building is a recently renovated old factory building which houses the first incubator for students at Copenhagen Business Academy. Cphbusiness Nørrebro has a total of 1,000 full-time students and 50 lecturers.

■ cphbusiness Lyngby  
 Trongårdsvej 44  
 DK-2800 Kgs. Lyngby  
 Tel.: +45 36 15 45 04

The campus in Lyngby is situated in the northern part of Copenhagen, 12 km from the centre of Copenhagen in scenic surroundings close to the beaches of Bellevue. The campus is a small friendly community for both Danish and international students. It is a socially active place with a popular on-site bar and facilities which allow students to organise sports events. You will also find a student residence hall on the campus with approx 100 rooms. Cphbusiness Lyngby houses 1,500 full-time students and 70 teachers.

■ cphbusiness City  
 Landemærket 11  
 DK-1119 Copenhagen K  
 Tel.: +45 36 15 45 02

The campus is located in the very heart of Copenhagen and the main pedestrian shopping area. This is the most recent campus, which opened in the summer of 2012 after extensive renovation of the historic building. It is the headquarters of Copenhagen Business Academy and houses the administration and management of the academy, as well as a library and various programmes within financial management that are offered in Danish. Cphbusiness City has a total of 950 full-time students and 50 lecturers.

■ cphbusiness Valby  
 Vigerslev Allé 18  
 DK-2500 Valby  
 Tel.: +45 36 15 45 05

The campus in Valby is located in a charming and up-and-coming area of Copenhagen with access to two major parks. It is an area in constant growth which continuously seems to be expanding its cultural offers and shopping opportunities. The campus building is shared with the Hospitality College and provides plenty of opportunities for collaboration within the areas of hotel, catering and management. Cphbusiness Valby has a total of 500 full-time students and 20 lecturers.

■ cphbusiness Hillerød  
 Peder Oxes Allé 4  
 DK-3400 Hillerød  
 Tel.: +45 36 15 45 06

Cphbusiness Hillerød is located in a newly built campus in Northern Zealand. Here students following biotechnical and chemical programmes in Danish collaborate closely with the large medical companies that reside in the nearby area. The campus is located within 15 minutes' walking distance from the centre of Hillerød and the magnificent Frederiksborg Castle. Cphbusiness Hillerød has a total of 100 students and 10 lecturers.

# EDUCATION THAT PUTS YOU AHEAD



CPHBUSINESS | TEL: +45 3615 4500 | CONTACT@CPHBUSINESS.DK | WWW.CPHBUSINESS.DK

□ cphbusiness City  
Landemærket 11  
DK-1119 Copenhagen K

□ cphbusiness Nørrebro  
Blågårdsgade 23B  
DK-2200 Copenhagen N

□ cphbusiness Valby  
Vigerslev Allé 18  
DK-2500 Valby

□ cphbusiness Lyngby  
Trongårdsvej 44  
DK-2800 Kgs. Lyngby

□ cphbusiness Hillerød  
Peder Oxes Allé 4  
DK-3400 Hillerød